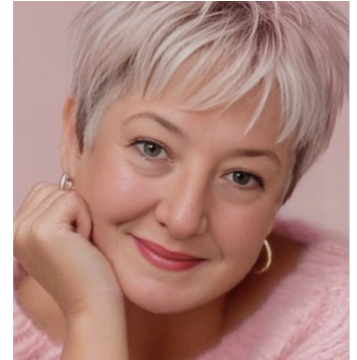


The Puzzle of Portraits

The April 14th meeting of the Grand Canyon Photography Club will feature a presentation on portrait photography by member Karen Mitcheltree. The program will be held at the Gmeiner Art & Cultural Center in Wellsboro, PA and begin at 7 p.m. after a short business meeting.

Karen asks the question "How do you make the portrait your mind envisions? Think of it like a puzzle that needs the pieces."



©Karen Mitcheltree

During this program Karen plans to present the border and pieces needed to complete your successful image. She will discuss the following: a brief synopsis on the various types of portraiture, pre-consultation questions to ask yourself or a client, an overview of in studio and on location sessions, equipment choices, general lighting, copyright and photo release documentation and general posing techniques. Karen is a Certified Professional Photographer. You can see more of her work at kamitcheltree.com.

The Grand Canyon Photography Club was established in 2001 by Art & Christine Heiny and is still going strong after all these years. The first meeting was held in January of that year and meetings continue to be held the second Tuesday of every month at the Gmeiner Art & Cultural Center in Wellsboro, PA. Meetings typically run from 7 p.m. to 9 p.m. Annual dues are \$20/year per individual, \$35 per family. Individuals may attend two meetings before they are asked to join.

Each month a program is given on some aspect of photography. Some past program topics: Smart Phone Photography, Architectural Photography, Composition, Lighting, Photography Ethics, Black and White, Portraiture, Post Processing and more. Programs are often presented by knowledgeable club members. Special presenters have included Wayne Palmer, Curt Weinhold, Ed Heaton, Tony Sweet, Art Becker, John Levandoski, and Jamie Konarski Davidson, to name a few. After a refreshment break, member images on a pre-determined topic are critiqued.

In This Issue

President's Message	page 2	Composition Corner	page 6
Meeting Minutes	page 3	Programs, Themes	page 7
One Minute Musings	page 4	Critique Images	page 8
Treasurer's Report, Reminders	page 5		



PRESIDENT'S MESSAGE

I hope this message finds you well and enjoying the transition into a new season. I would like to take a moment to thank everyone who attended our February program on editing. It was both fun and engaging, with great participation and plenty of useful takeaways. It is always inspiring to see how much we can learn from one another.

As we move into spring, I find myself especially excited for all the new growth and wildlife that comes with it. This time of year offers endless opportunities to get outside and observe the world through our lenses, from budding flowers and fresh greenery to the return of birds and other wildlife. It is a season of renewal and a perfect time to challenge ourselves creatively and capture the beauty unfolding around us.

Looking ahead, I am excited to share that our April program will be "The Puzzle of Portraits," presented by Karen Mitcheltree. This session will explore the essential elements of a successful portrait, including planning questions to ask before a session, different portrait styles and lighting approaches, equipment considerations, and key topics such as photo releases, copyright, and permit requirements, along with practical guidance on posing and composition techniques like leading lines.

Karen looks forward to an interactive discussion and hopes to have the opportunity to pose a member or a few after the presentation for some hands-on learning.

Thank you all for being part of our photography community. I look forward to seeing you at the next meeting.

Missy



©Missy Volino



GCPC March 10, 2026 Meeting Minutes

The March meeting of the Grand Canyon Photography Club was held on Tuesday March 10, 2026 and called to order by President Missy Volino. A reminder to all that there are still a few membership dues that have not been paid. Please see Treasurer Gary Thompson for tender of payment.

Missy asked if there were any announcements from the membership and, with none, she asked if there were any additions or corrections to the minutes as posted in the newsletter. No changes were made so a motion to accept the minutes was made by Paul Bozzo, seconded by Bob Bair, and approved by the membership in attendance. The Treasurer's report was given by Gary Thompson and the club's beginning balance for February was \$2,694.66 and an ending balance of \$2,951.66. Missy requested a motion to accept the Treasurer's report which was made by Jo Swenson, seconded by Mia Lisa Anderson, and approved by the membership in attendance.

There were no new updates on display availability. Karen Mitcheltree gave an update on her presentation that she will be providing to the club in April, which will be *The Puzzle of Portraits*.

With no new business, Missy asked for a motion to adjourn the business portion of the meeting, which was made by Bruce Bilder, seconded by Sharon Connolly, and approved by the membership in attendance.

Respectfully Submitted,
Tana Carpenter
Recording Secretary



©Mia Lisa Anderson



ONE MINUTE
MUSINGS

THOUGHTS ABOUT
PHOTOGRAPHY

—Linda Stager

The Gift of the Wolf Tree

This month has me musing about the wolf tree. One of my FB followers pointed me to this idea after seeing this photo I had posted on my page.

If you've ever driven past an open field and noticed one broad, sprawling tree standing alone—arms reaching wide, limbs thick and expressive—you may have met a wolf tree.

A wolf tree is a tree that grows without competition. Unlike trees crowded in the forest that stretch tall and thin, chasing light, a wolf tree has room. It develops wide branches, a full crown, and often a sculptural presence. These trees are usually old. Weathered. They carry character in every limb.

For photographers like US, they are a dream.

A wolf tree photographs differently in every season. In winter, we see gnarled branches etched against the sky. In spring and summer, its canopy becomes generous and full. In autumn, it can command an entire field with color. Even in fog or snow, it stands out like an exclamation point to the landscape.

More than that, wolf trees carry story. They speak of time, resilience, and the beauty of standing alone. (And you all know how I feel about photography being a storytelling method. I do it every day.)

Next time you pass a wolf tree, slow down. Walk around it. (Many are on private land, so get permission first.)

Study how the light moves through its crown. Take a photo and tell its story.

A wolf tree isn't just a subject—it's a story waiting to be told.



©Linda Stager



Club Reminders Critique Submissions

Please send critique submissions (or other images you'd like to submit for the newsletter) to Mia at: mialisa1957@gmail.com. Follow the guidelines we have always used, i.e. 1024 or 2048 pixels on the long side and one submission per critique. Remember to put your name in the file name, e.g. anderson_tulips.

Treasurer's Report	
Beginning Balance	\$2,951.66
Cash IN	
Dues	\$75.00
Cash OUT	
Bank Fee	\$3.00
Ending Balance	\$3,023.66
<i>Respectfully Submitted</i>	
<i>Gary Thompson, Treasurer</i>	

The Grand Canyon Photography Club

2026 Officers:

President: Missy Volino
Vice President: Brad Adams
Treasurer: Gary Thompson
Recording Secretary:
 Tana Carpenter
Corresponding Secretary:
 Linda Stager

Directors:

2025-2026:
Greg Caulkins, Will Slotter

2026-2027
Karen Mitcheltree, Casey Volino

Committee Chairpersons:

Newsletter: Mia Lisa Anderson
Membership: Gary Thompson
Exhibits: Open
Website: Mia Lisa Anderson
Publicity: Linda Stager
For more information, please
contact:
president@gcphotoclub.org



©Mia Lisa Anderson



COMPOSITION
CORNER

by *Linda Stager*

April's Turning Point

April, for us, begins dull and drab. The landscape still carries the look of winter. Colors are muted. Trees stand bare against a pale sky. It can feel like there's nothing to photograph.



But stay with it. Because somewhere along the way, something shifts.

Buds begin to swell. The light softens. And then one morning, almost without warning, the warblers arrive. By the end of the month, the whole scene feels different. Spring has quietly stepped in.

April is not about instant beauty. It's about learning to see change as it happens.

Compose the "Before"

Early April may not feel inspiring at first glance. But this is where your story begins.

Look for simple, honest compositions. Bare branches against the sky. Open fields. Quiet water. Keep your frames clean and uncluttered.



These images set the stage for everything that follows.

Watch for Small Shifts—April doesn't change overnight. It builds.

A hint of green along a branch. Softer tones in the grass. Reflections in water that feel just a little warmer.

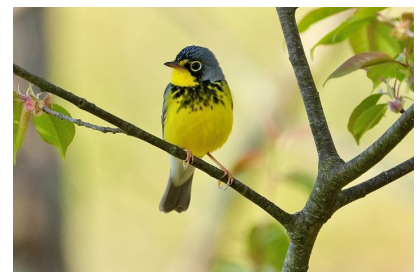
Move in closer. Simplify your composition. Let those small details become your subject.

What feels ordinary one day becomes meaningful when you realize it wasn't there the week before.

Be Ready for Life to Enter the Frame— And then, the warblers come.

They move quickly, often high in the branches, full of energy and color after a quiet winter.

Compose your scene first. Find clean backgrounds. Watch the light. Then wait.



continued on page 7



GCPC 2026 Calendar of Events

Meetings are at 7 p.m. on the 2nd Tuesday of every month
at the Gmeiner Art & Cultural Center unless otherwise noted

Mini-Solo Shows at the Deane Center, Main Street, Wellsboro:

April: Brad Adams

Mini-Solo Shows at Arise Cafe, Central Ave., Wellsboro:

April: Paul Bozzo

The Warehouse Theater: Bruce Dart & Linda Stager

Programs and Themes:

April 14, 2026: *The Puzzle of Portraits* presented by Karen Mitcheltree.
Critique: *Before & After Edited Images*

May 12, 2026: *Social Media & Photography* presented by Linda Stager.
Critique: *Family Portraits*

June 9, 2026: *Nature Photography Agenda* presented by Brad Adams.
Critique: *Social Media Image*

July 14, 2026: *Macro Photography* presented by Missy Volino. Critique: *A
Planned Photo and the Explanation of the Plan.*

*The position of exhibit coordinator has been filled
by Susan and Jim Storment*

*Please contact them if you would like to exhibit at
one of the venues. First come, first serve.*

jamesstorment@gmail.com

susanlovejoy@yahoo.com

April Refreshments:

Snack: Bob Bair

Beverage: Shannon Davis

continued from page 6

Return to the Same Place— April rewards those who come back.

Visit the same tree. The same bend in the creek. The same stretch of trail. Compose it again and again as it changes.

What begins as dull and drab slowly becomes something alive.

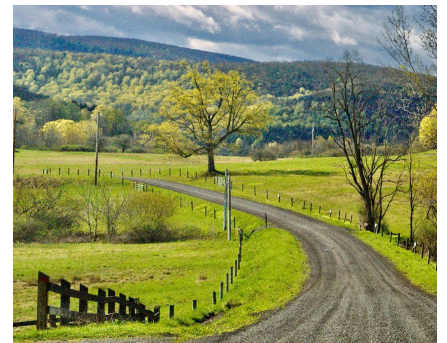
And your photographs will tell that story better than any single image ever could.

A Gentle Challenge for April— Choose one spot this month and commit to it.

Photograph it in the early days when everything feels quiet and still. Then return as the buds appear. And return again when the warblers arrive.

Let your compositions follow the season's rhythm.

April is all about noticing spring's arrival...day by day.



*All Images in this article
©Linda Stager*



Grand Canyon
PHOTOGRAPHY CLUB

The Grand Canyon Photography Club
www.gcphotoclub.org

Winter Light Photos



©Brad Adams



©Paul Bozzo



©Tana Carpenter



©Bob Bair



©Diane Cobourn



©Jeanette Jones



©Linda Stager



©Karen Mitcheltree



©Missy Volino