



# The Grand Canyon Photography Club

## The Hawaiian Islands Through My Lens:

*Photos by Suzan Richar*

On February 14 at 7 pm at the Gmeiner Art and Cultural Center in Wellsboro, PA, Suzan Richar will present, "The Hawaiian Islands Through My Lens."



©Suzan Richar

Suzan will show many beautiful scenes of several islands. She will take her audience from Honolulu's Waikiki sandy beach to the Napali Coast cliffs, and from the Waimea Canyon to rainforests, inside a lava tube, and wind surfers on the sea.

As Suzan states, "Hawaii's landscape is very diverse. Many only think of sandy beaches, both white and black from the lava flow, but it is so much more-- from snow-capped mountains, jungle terrain and cities to wild chickens running everywhere.



©Suzan Richar

The program will be more of a travelogue than a lesson in photography. Come and see what George Eastman (Kodak) and I were able to capture in my eight days in Paradise."

A Galeton native now residing in Wellsboro, Suzan is a photographer and an artist. Suzan feels that the two go hand in hand because the same principles apply to both forms of art. She uses her artist's eye to capture the scene in the viewfinder and then as an artist she paints from her photographs. Suzan is a naturalist and doesn't use photo editing programs on her photos. She mainly limits her post-image processing to cropping. She says her photos are like herself, "What you see is what you get."



Suzan was president of the Grand Canyon Photography Club from 2009-2011 and is also active in the Wellsboro Art Club. She works full time in her insurance agency and enjoys gourmet cooking, travel, reading, and spending time with family and friends. Suzan has three grown children and seven grandchildren.

### What's Inside

GCPC President's Message.....2	Treasurer's Report for January 2012..... 3	GCPC Calendar of Events.....8
Note About the Cover Photo.....2	Ann-ecdotes..... 4	Mystery Macro.....8
January 12 Minutes..... 3	January Critique images .....6	February 14 Meeting At a Glance.....9
		Check Out These Links.....9

## GCPC President's Message

### 2012 Officers:

President: Lee Hoar

Vice President: Bruce Dart

Treasurer: Gary Thompson

Recording Secretary: Mia Lisa Anderson

Corresponding Secretary:  
Judith Giddings

### Directors:

2011-2012: Chelsea Wagner &  
Nancy Bickham

2012-2013: Lonny Frost & Rhonda Keller

### Committee Chairpersons:

Newsletter: Judith Giddings

Membership: Gary Thompson

Exhibits: Bruce Dart

Shows: TBA

Publicity: Nancy Bickham

For more information, please contact:  
Lee Hoar

E-mail: [president@gcphotoclub.org](mailto:president@gcphotoclub.org)



©Lee Hoar

The weather here in Apache Junction (Arizona) is picture perfect. The sky is crystal clear, 54 degrees at 7:30 am, not at all what I was thinking when I picked this month's theme of White on White. It's meant to be a challenge for all of our photography senses. As they say today, "If you don't use it you lose it." I don't believe that this group has lost anything. It would be fun to look at a critique from five or six years ago just to see how far we have really come.

I understand that last month's meeting was very well attended and that the program may have been just a bit longer than normal, but it was very informative and was enjoyed by all. Thank you, Bruce.

This month's program is by Suzan Richar on her trip to Hawaii. I'm sure she will share her expertise with her pictures and bring a little warmth to all.

Next month's program will be *Preparing Images for Show* by Mark Bixby and Bruce Dart.

The April program is *Photoshop Elements* by Wayne Palmer. In April we will do a wildflower walk with Ken Meyer and the pictures from that walk will be the May program.

Keep your cameras warm!

Lee Hoar  
President

#### ***A Note About the Cover Photo:***

*Paul Bozzo's image of his neighbor's trees captures the feeling of winter.*



## Minutes of January 12, 2012

Vice-president Bruce Dart called the meeting to order. President Lee Hoar is away for the next few months.

Gary Thompson is not present, but we will accept checks and cash for the 2012 dues.

Tina Tolins proposed a "thank you" round of applause for outgoing president Suzan Richar for all her hard work on behalf of the club during her term.

Mia Lisa Anderson reminded members that the member gallery of the web site is now online. If you are interested in submitting photos for the gallery, send them to Mia through the [critique@gcphotoclub.org](mailto:critique@gcphotoclub.org) address or [MiaLisa57@epix.net](mailto:MiaLisa57@epix.net). Send not more than 3 images with the longest side set

to 600 px. No border on the photos, please.

Bruce introduced the evening's program. He explained he received the DVD "The Ultimate Photo Guide" from *Outdoor Photographer* in the mail. He described it as a beginner's guide, though the photography by Karl Taylor is excellent and beyond beginner status.

After the program and refreshment break, Tina led the critique on the theme for the month, "Holidays."

Respectfully submitted,

*Mia Lisa Anderson*  
Recording Secretary



*Christmas Bokeh ©Mia Lisa Anderson*

## Treasurer's Report for January 2012

Beginning Balance	<b>\$2662.48</b>
Cash IN	
Dues	230.00
Cash OUT	-0-
Ending Balance	<b>\$2892.48</b>

*Respectfully Submitted,*  
*Gary Thompson, Treasurer*

## 2012 Club Dues Are Now Being Accepted

Dues must be paid by the March meeting if you wish to receive the newsletter. Please bring your cash or check (payable to GCPC) to the February meeting or send your dues to the GCPC treasurer:

Gary Thompson  
285 Owen Hollow Road  
Big Flats, NY 14814

Individual: \$20.00  
Family: \$35.00

## Reflections



### Ann-ecdotes

*Ann Kamzelski presents tips, techniques, and creative ideas for getting great photos.*

One of my favorite subjects to photograph is reflections. You can see reflections in many surfaces, but for this article, I am only going to talk about reflections in water. I will write about reflections in other shiny surfaces at another time.



One of the few times that breaking the rule about putting the horizon in the center of an image is with a sharp reflection in water. It is really neat to see an exact replica of an object reflected in water.



However, if you have taken any photographs of reflections in water you will notice that the reflection is always darker than the part of the image that is not a reflection. There are a few of ways that you can compensate for this.

First, you can use a split neutral density filter to darken the unreflected part of the photo so that it matches the reflection. A split neutral density filter is grey on one half (1, 2 or 3 f-stops) and clear on the other half with a gradual change between the two. You put this filter over the lens while you are taking the photo and move it up or down to darken just the part that you select. I used this technique for years. I carried 1 and 2 f-stop filters with me all the time.



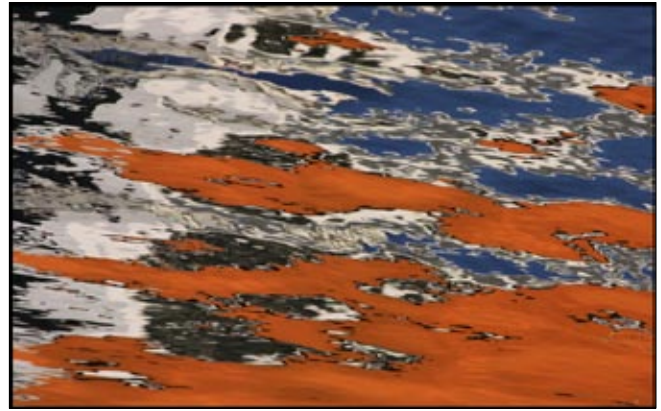
Next, you could take two images of the same shot at different exposures and then combine them in Photoshop or other image processing software. You would do this by layering one of the images over the other and erasing the part of the top image that is too light or dark to make them the same tonal range.



My method of choice now is to take several different exposures of the scene and create an HDR (high dynamic range) image with them. I have found that I like the results best with this technique and you don't have to spend time working in Photoshop or be concerned about whether you used the correct neutral density filter. I use a program called Photomatix for doing my HDR images.



Another fun thing to do with reflections is to create inverted or abstract images. If the reflection is really clear, I like to take a shot of the reflection then turn it up-side down for an interesting effect. Abstract images of reflections can be enjoyable to make too. You just use a long focal length or zoom lens and only shoot part of the reflection that has interesting patterns. This technique is easy to do since there is no issue with exposure. You can try fast or slow shutter speeds to get different effects. I tend to prefer faster shutter speeds to stop the movement, especially if the water is moving.



Other ideas are to look for reflections in puddles after a rain and be sure to look for what I call "kool-aid" water which is areas of streams that are red, yellow, green, blue or orange due to leaves and sky reflecting in the water. Then there are reflections in water drops; but that is an entire article all by itself...

*Text and images by Ann Kamzelski*

I would love to receive your comments, questions, or any other feedback about Ann-ecdotes. Email me at [kamzel@epix.net](mailto:kamzel@epix.net). Ann



©Sharon Connolly



©Lonny Frost

## January Critique: Christmas/Holiday



©Linda Sichel



©Sharon Connolly



©Lonny Frost



©Dave Ralph



©Bob Bair



©Ann Kamzelski



©Dwayne Gipe



©Jack Preston



©Bruce Dart



©Ken Meyer



©Nancy Bickham



©Gary Thompson



## GCPC Calendar of Events for 2012

Meetings are at 7 p.m. on the 2nd Tuesday of every month  
at the Gmeiner Center unless otherwise noted.

**Mini-solo Shows at the Native Bagel, Central Avenue, Wellsboro:** February, Paul Bozzo; March, Bruce Dart

**The Warehouse Theatre:** Images from various club members. *Thanks to all who contributed.*

**February 14:** Suzan Richar, *Hawaii Through My Lens*; Theme, *White on White*; Critique, Ken Meyer

**March 13:** Mark Bixby & Bruce Dart, *Preparing Images for Show*; Theme, *Youth*; Critique, Paul Bozzo

**April 10:** Wayne Palmer, *Photoshop Elements*; Theme: *Pennsylvania/New York*

**Late April (date to be announced):** *Spring Wildflower Walk* with Ken Meyer

**May 8:** Ken Meyer, *Spring Wildflowers*; Theme, *Spring*, Critique, Ken Meyer

**June 12:** *Photo Shoot at Ann Kamzelski's*, no critique.

**July 10:** Program to be announced; Theme, *Action*; Critique, Nancy Bickham

**August 14:** Program to be announced; Theme, *Vacations*

**September 11:** Program, Ann Kamzelski; Theme, *Harvest*

**October 9:** Program to be announced; Theme, *Leaves*

**November 13:** Lee Hoar; *Birds, Bees, & Butterflies*; Theme, *Signs*

**December 11:** Holiday party; no theme, no critique

Please contact Bruce Dart at [bdphoto@ptd.net](mailto:bdphoto@ptd.net) if you are interested in displaying your photos at the Native Bagel or if you have images suitable for display at the Warehouse Gallery.

### Mystery Macro

Check out this month's  
Mystery Macro  
and send your guess to  
[wgiddings@epix.net](mailto:wgiddings@epix.net)



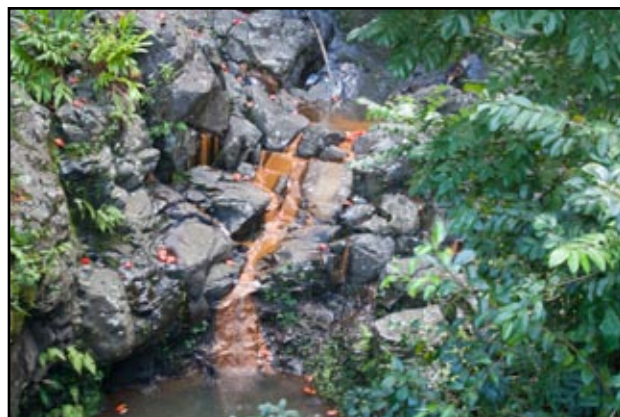
©Judith Giddings



No one guessed last  
month's mystery, a tail-  
light, contributed by  
Ann Kamzelski



©Kev Card



©Nancy Schoonover



122 Whitetail Circle  
Wellsboro, PA 16901



©Paul Bozzo

## Check Out These Links

### **Wolfram Jobst's January Exhibit at the Gmeiner**

Catch a glimpse of Wolfram's images and many people you know at his opening reception. Video by Paul Bozzo.  
<http://www.youtube.com/watch?v=1iYt3OjCX7s>

### **Five ways to use the Web to become a better photographer**

National Geographic Traveler presents some great tips on how to use the Internet to improve your photography. Includes links to inspiring websites, rating/reviews of equipment, how-to articles by the best shooters, ways to post your photos for critique on line, and where to order prints.

<http://traveler.nationalgeographic.com/photo-websites>

### **February 14 Meeting At a Glance**

*Hawaii Through My Lens:* Suzan Richar

Critique: Ken Meyer; Theme, *White on White*

Refreshments this month: Bob Bair

Beverages: Sharon Connolly

Setup: Bruce Dart

**Photo-related Classifieds:** Do you have photo equipment or materials that you would like to buy, sell, swap, or give away? Send your ad to [wgiddings@epix.net](mailto:wgiddings@epix.net). Newsletter deadline is two weeks before each meeting.



©Jack Preston